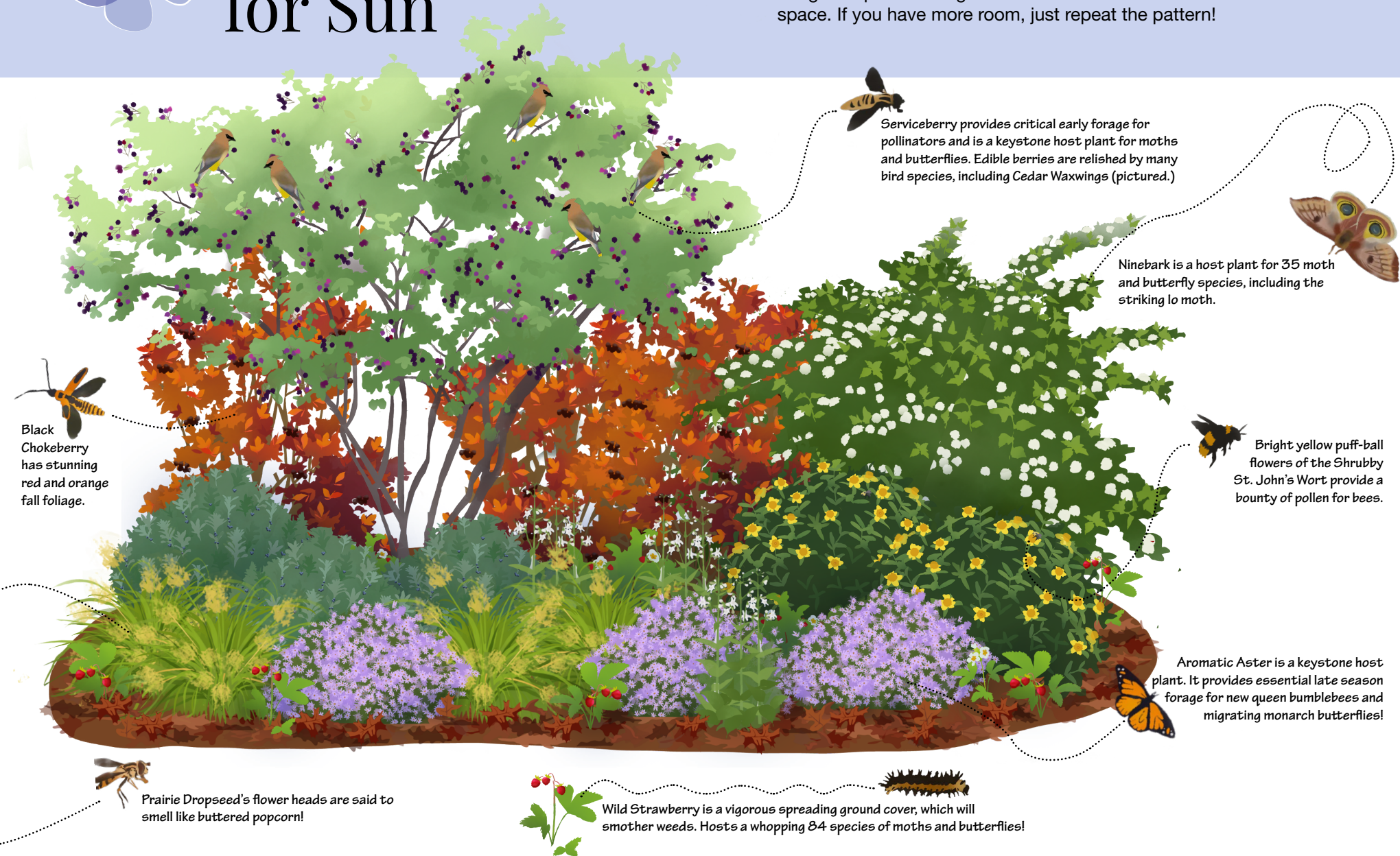




Hedgerow for Sun

Hedgerows are layered, linear plantings which provide big benefits to pollinators, creating habitat as well as providing pathways allowing wildlife to move between green spaces. Planting a hedgerow in a side yard, for example, will help connect front and backyard habitats as well as providing privacy. Our compact hedgerow plan is designed to fit into a small urban or suburban space. If you have more room, just repeat the pattern!



Black Chokeberry has stunning red and orange fall foliage.

Serviceberry provides critical early forage for pollinators and is a keystone host plant for moths and butterflies. Edible berries are relished by many bird species, including Cedar Waxwings (pictured.)

Ninebark is a host plant for 35 moth and butterfly species, including the striking Io moth.

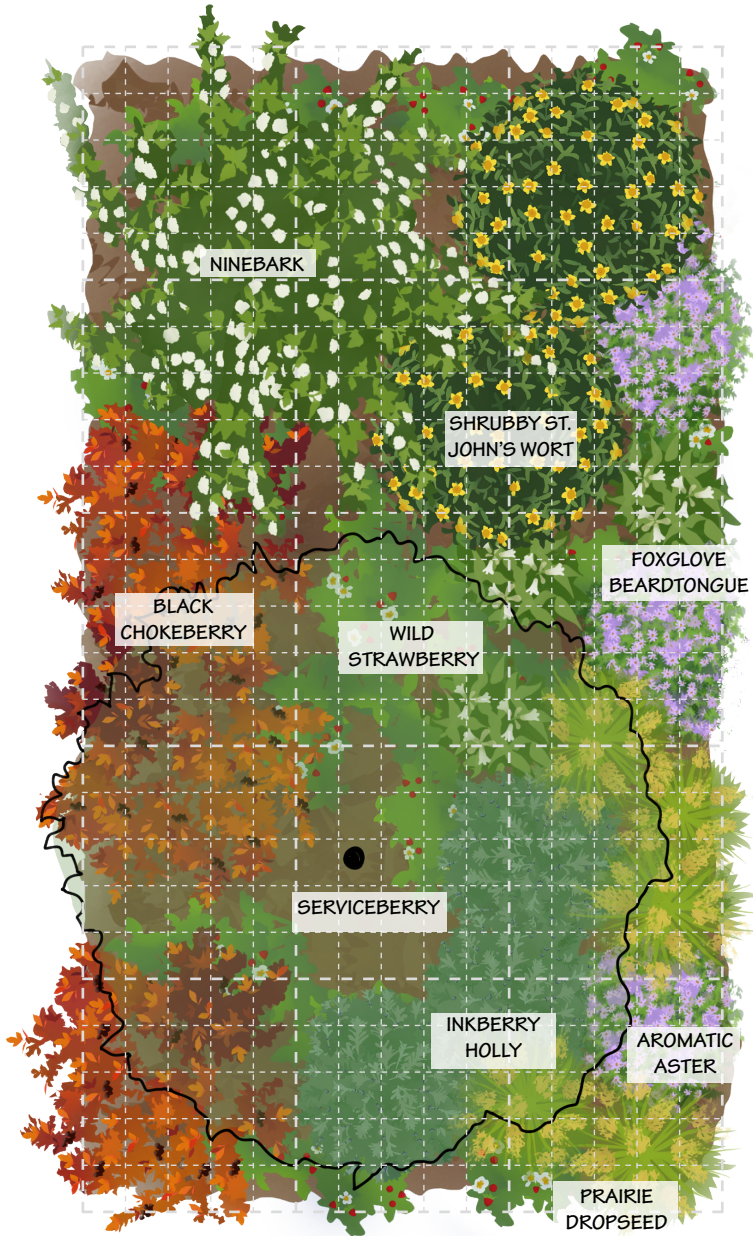
Bright yellow puff-ball flowers of the Shrubby St. John's Wort provide a bounty of pollen for bees.

Aromatic Aster is a keystone host plant. It provides essential late season forage for new queen bumblebees and migrating monarch butterflies!

Prairie Dropseed's flower heads are said to smell like buttered popcorn!

Wild Strawberry is a vigorous spreading ground cover, which will smother weeds. Hosts a whopping 84 species of moths and butterflies!

15' x 25' GARDEN PLAN



SPECIES INFORMATION

Common Name	Latin Name	Space	HT	QNTY	April	May	June	July	Aug.	Sept.	Oct
Serviceberry	<i>Amelanchier canadensis</i>	15'-20'	15'-25'	1							
Wild Strawberry	<i>Fragaria virginiana</i>	1'	.5'	15							
Black Chokeberry	<i>Aronia melanocarpa</i>	3'-6'	4'-6'	3							
Foxglove Beardtongue	<i>Penstemon digitalis</i>	2'	3'	3							
Inkberry Holly	<i>Ilex glabra 'Shamrock'</i>	3'-4'	3'-4'	3							
Common Ninebark	<i>Physocarpus opulifolius</i>	6'-10'	5'-12'	1							
Shrubby St. John's Wort	<i>Hypericum prolificum</i>	4'	4'	3							
Prairie Dropseed	<i>Sporobolus heterolepis</i>	2'	2'	5							
Aromatic Aster	<i>Aster oblongifolium</i>	1.5'	1.5'	3							

ADDITIONAL INFORMATION



These plants are native to the eastern US. Determine if a species is native in your area at plants.usda.gov.



The planting site should be full sun (6+ hours/day) with good drainage.



Research suggests that green-leaved varieties of Common Ninebark are preferred by leaf-eating insects like caterpillars over the red or purple-leaved cultivars.



While Serviceberry can produce fruit on its own, planting a second Serviceberry within 50' will increase fruit production.



Water plants generously after planting, and follow up with weekly watering if the season is dry. Once established, these plants should be drought-tolerant.



You should mulch around newly planted perennials with straw, wood mulch, or newspaper to prevent weeds. Leave the leaves under your hedgerow to preserve habitat for overwintering insects.



Pollinator Pathway

Created by Pollinator Pathway www.pollinator-pathway.org.
Artwork by Paige Lyons. Available for free for educational or academic use.